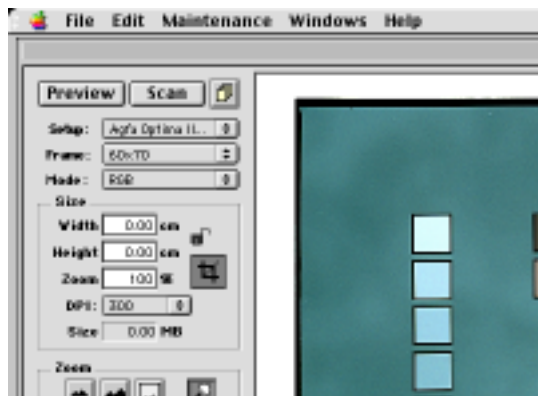


## How to create your own Negative setup

Start by locating an original that is developed on the film type, you do not have any setup for. Make sure that the image you are going to use, has patches of absolute Black and White, also including preferably a 50% gray patch. If nothing can be verified to be exactly 50% gray, make sure there is some sort of dominant object in the image, that has a gray balance that is even. I.e. without any objects going into this area.

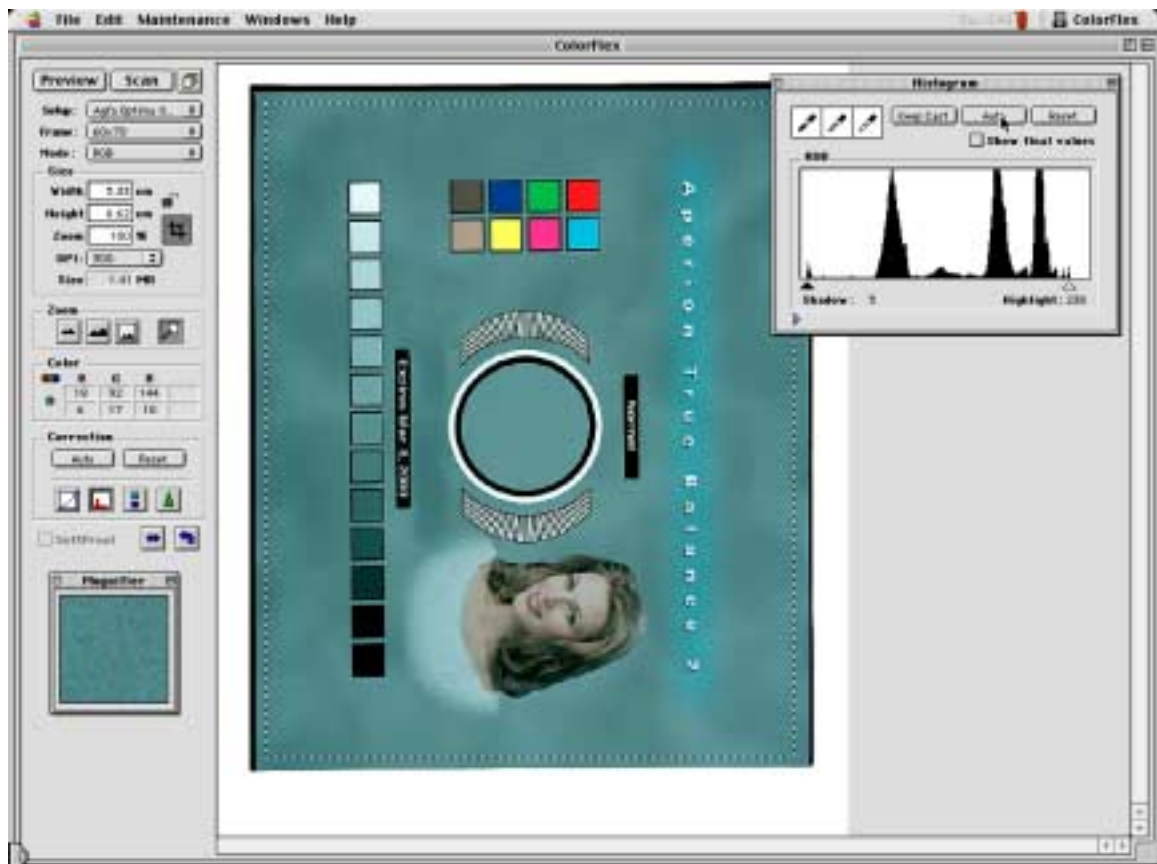
Advise could be to use a Color checker chart as the object for the shoot.

Place it in the IMACON Flextight scanner, and do a preview.

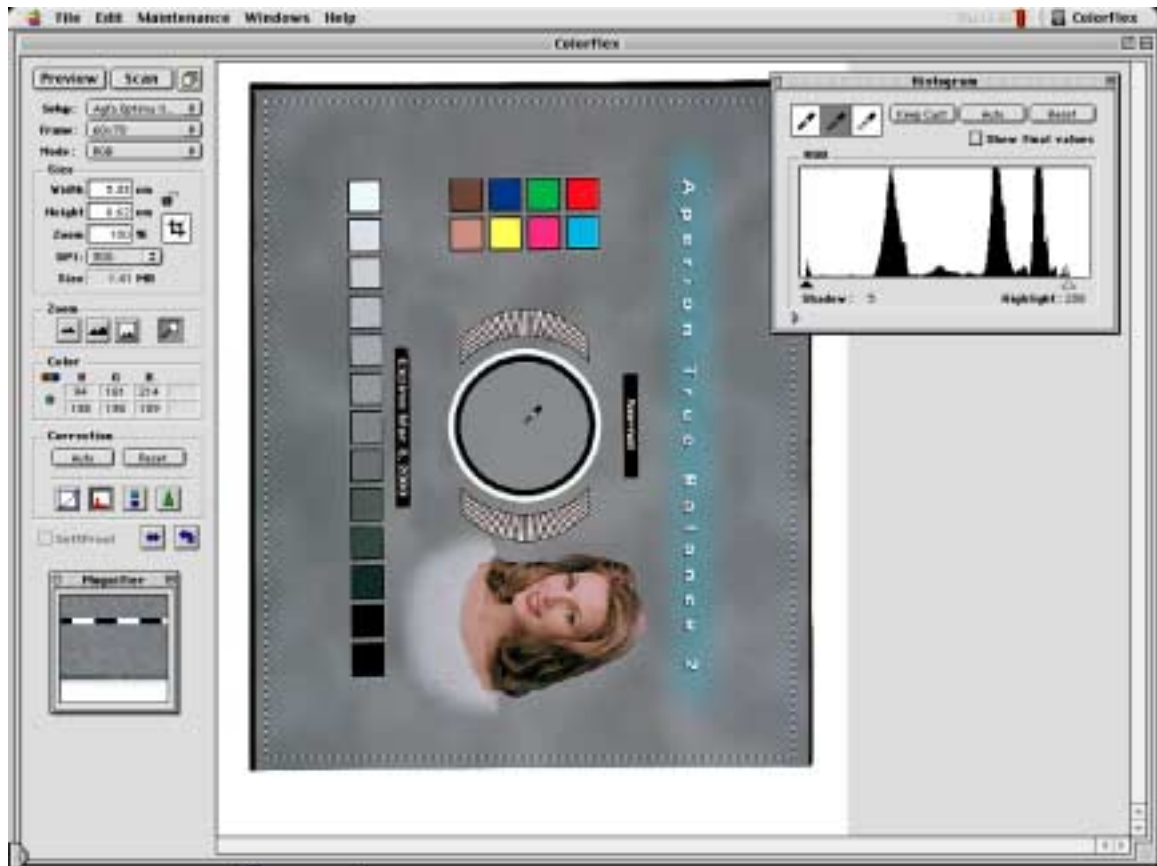


Select a random Negative setup from the Setup menu.

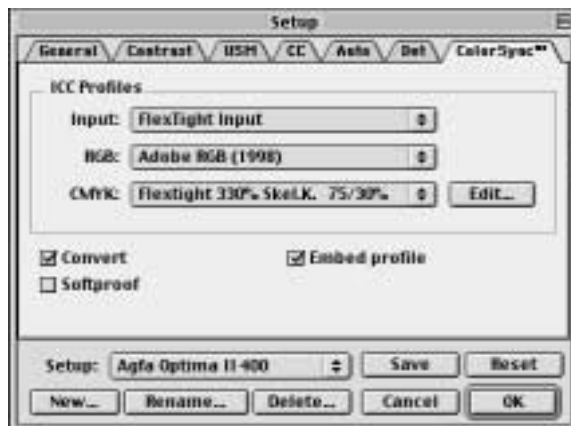
No matter that the preview looks all wrong, crop the image within the border frame. Set the light and shadow by using the Auto function.



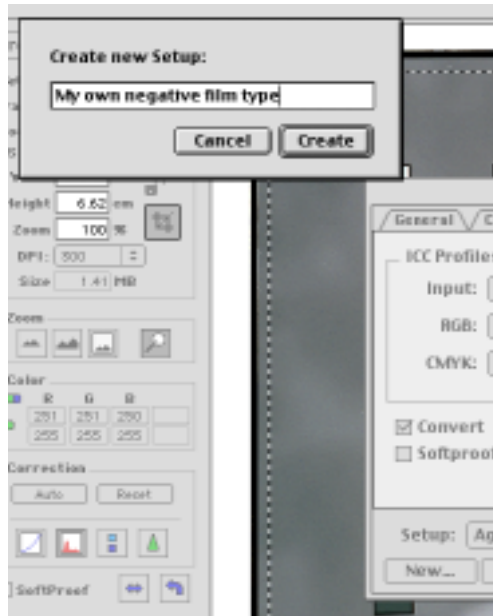
Set the neutrality by clicking in the gray patch with the "neutralize graybalance" tool, that is in the top of the histogram palette.



Go to the Setup menu and select the ColorSync tab. Set it up to match your current profile settings.



Press the New button, located in the down left corner. Type in a name referring to the Film type you are making the setup for.



Press Create, and later OK in the Setup menu.

You have just made a Negative setup, and the setup will now be found in the Setup Panel.

IMACON2000